



Rab 2A Monoclonal Antibody

Catalog No	YP-Ab-16104
Isotype	IgG
Reactivity	Human;Mouse;Rat;Bovine;Chicken;Dog;Pig;Zebrafish
Applications	WB;IF
Gene Name	RAB2A
Protein Name	Ras-related protein Rab-2A
Immunogen	Purified recombinant human Rab 2A (C-terminus) protein fragments expressed in E.coli.
Specificity	Rab 2A Monoclonal Antibody detects endogenous levels of Rab 2A protein.
Formulation	Purified mouse monoclonal in buffer containing 0.1M Tris-Glycine (pH 7.4, 150 mM NaCl) with 0.2% sodium azide, 50% glycerol.
Source	Monoclonal, Mouse
Purification	Affinity purification
Dilution	Western Blot: 1/1000 - 1/2000. Immunofluorescence: 1/100 - 1/500. Not yet tested in other applications.
Concentration	1 mg/ml
Purity	≥90%
Storage Stability	-20°C/1 year
Synonyms	RAB2A; RAB2; Ras-related protein Rab-2A
Observed Band	
Cell Pathway	Endoplasmic reticulum-Golgi intermediate compartment membrane ; Lipid-anchor . Melanosome . Endoplasmic reticulum membrane ; Lipid-anchor . Golgi apparatus membrane ; Lipid-anchor . Cytoplasmic vesicle, secretory vesicle, acrosome . Localized in the Golgi apparatus in the round spermatids and in the acrosome in the elongating spermatid (By similarity). Identified by mass spectrometry in melanosome fractions from stage I to stage IV (PubMed:17081065). .
Tissue Specificity	Brain, Skin,
Function	function:Required for protein transport from the endoplasmic reticulum to the Golgi complex.,similarity:Belongs to the small GTPase superfamily. Rab family.,subcellular location:Identified by mass spectrometry in melanosome fractions from stage I to stage IV.,subunit:Interacts with PRKCI.,
Background	The protein encoded by this gene belongs to the Rab family, members of which are small molecular weight guanosine triphosphatases (GTPases) that contain highly conserved domains involved in GTP binding and hydrolysis. The Rabs are membrane-bound proteins, involved in vesicular fusion and trafficking. This protein is a resident of pre-Golgi intermediates, and is required for protein



transport from the endoplasmic reticulum (ER) to the Golgi complex. Alternatively spliced transcript variants encoding different isoforms have been found for this gene. [provided by RefSeq, Oct 2011],

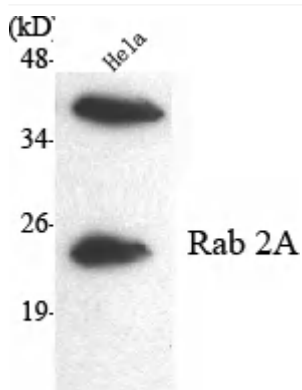
matters needing attention

Avoid repeated freezing and thawing!

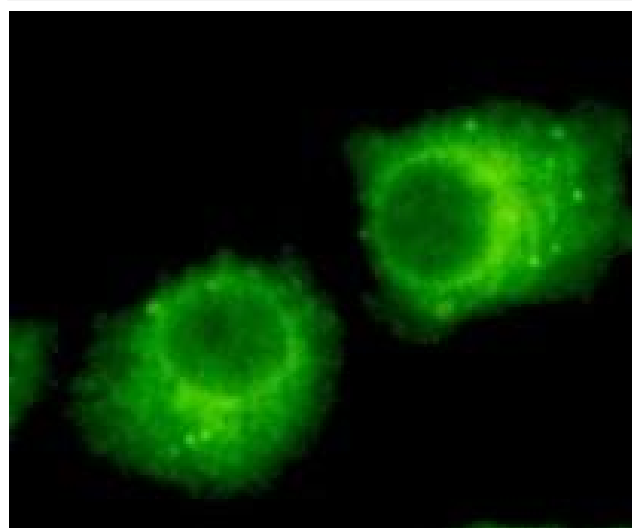
Usage suggestions

This product can be used in immunological reaction related experiments. For more information, please consult technical personnel.

Products Images



Western Blot analysis using Rab 2A Monoclonal Antibody against HeLa cell lysate.



Immunofluorescence analysis of HeLa cells using Rab 2A Monoclonal Antibody.